



THE 'STAR' HANGAR

By A.A.A.W.A.,

The One-Stop-Shop Aviation Solution
Company



GOAL

AAAWA's Star

- * Central Building (a)
- * Central Building (b)
- * Satellite Building (a)
- * Satellite Building (b)
- * Hangars (a)
- * Hangars (b)
- * Basement (a)
- * Basement (b)
- * Basement (c)
- * Dimensions (a)
- * Dimensions (b)
- * Dimensions (c)

ENVIRONMENT SYSTEMS

- * Megadoor (a)
- * Megadoor (b)

NEEDS

RETURN

CONCLUSION





GOAL

GOAL

AAAWA's Star

- * Central Building (a)
- * Central Building (b)
- * Satellite Building (a)
- * Satellite Building (b)
- * Hangars (a)
- * Hangars (b)
- * Basement (a)
- * Basement (b)
- * Basement (c)
- * Dimensions (a)
- * Dimensions (b)
- * Dimensions (c)

ENVIRONMENT SYSTEMS

- * Megadoor (a)
- * Megadoor (b)

NEEDS

RETURN

CONCLUSION

- To build 20 real 'one-stop shop aviation solution hangars, strategically placed around the globe following the aircraft density, offering space to 8 wide- and 8 narrow body aircraft (or any other configuration) at the same time in the one facility."
- This ambitious project is based on the need for experience, research and reliability at the most advanced environmental M.R.O. facility in the industry.





GOAL

AAAWA's Star

- * Central Building (a)
- * Central Building (b)
- * Satellite Building (a)
- * Satellite Building (b)
- * Hangars (a)
- * Hangars (b)
- * Basement (a)
- * Basement (b)
- * Basement (c)
- * Dimensions (a)
- * Dimensions (b)
- * Dimensions (c)

ENVIRONMENT

SYSTEMS

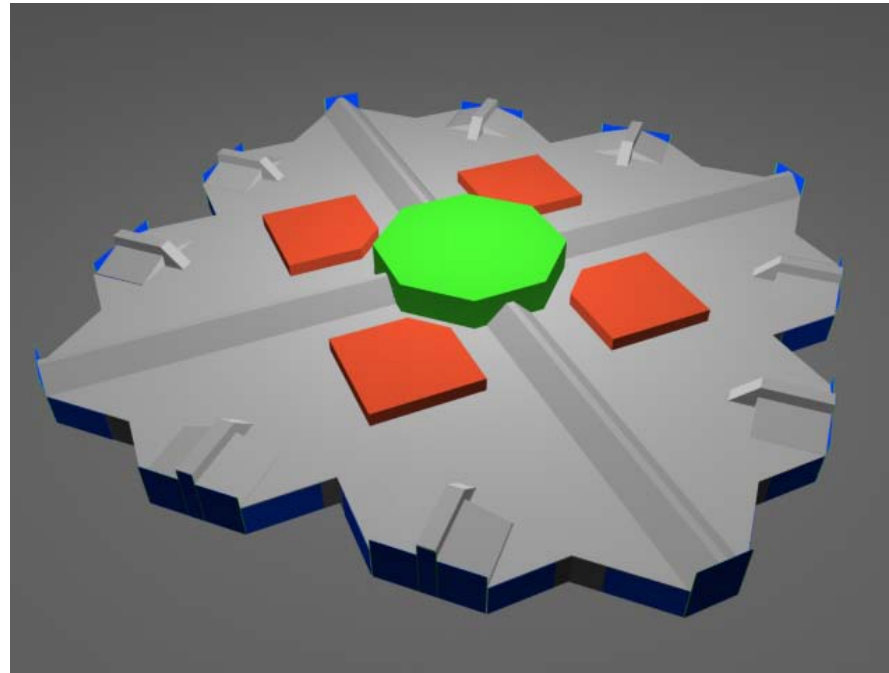
- * Megadoor (a)
- * Megadoor (b)

NEEDS

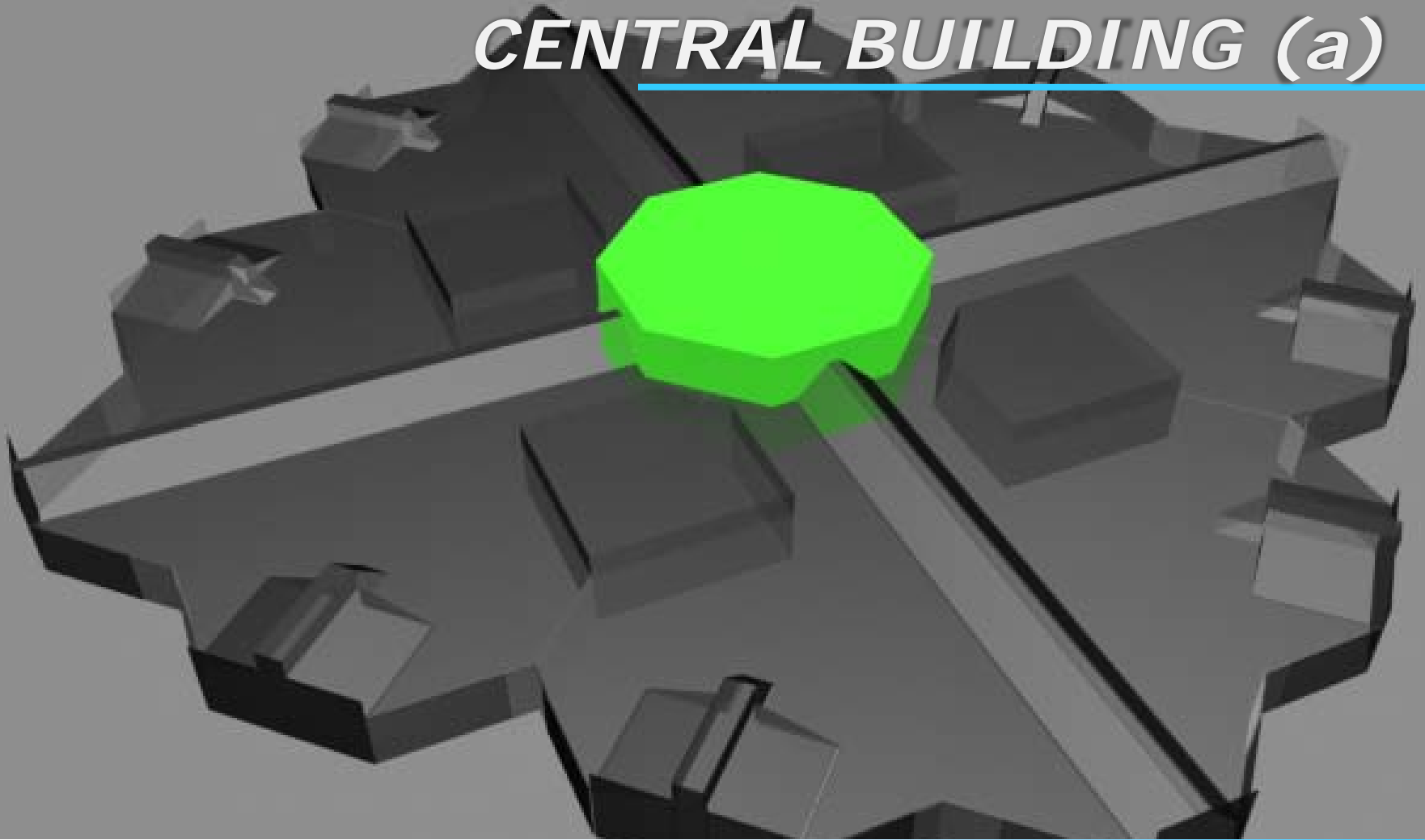
RETURN

CONCLUSION

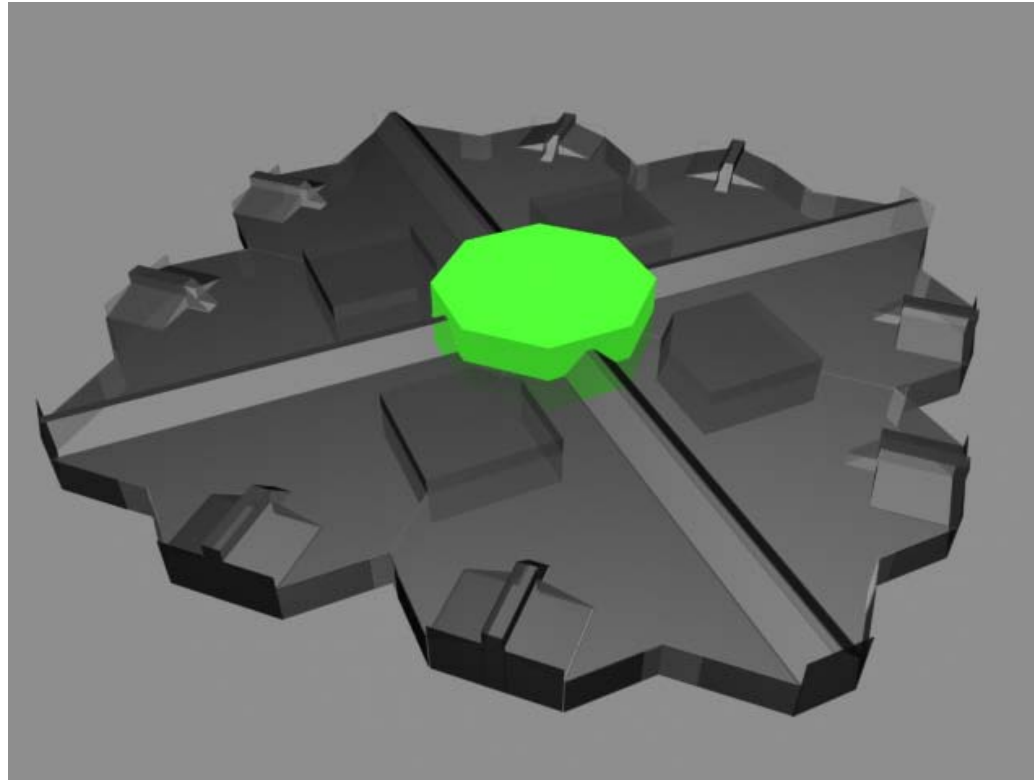
Presentation of AAAWA's "STAR"



CENTRAL BUILDING (a)



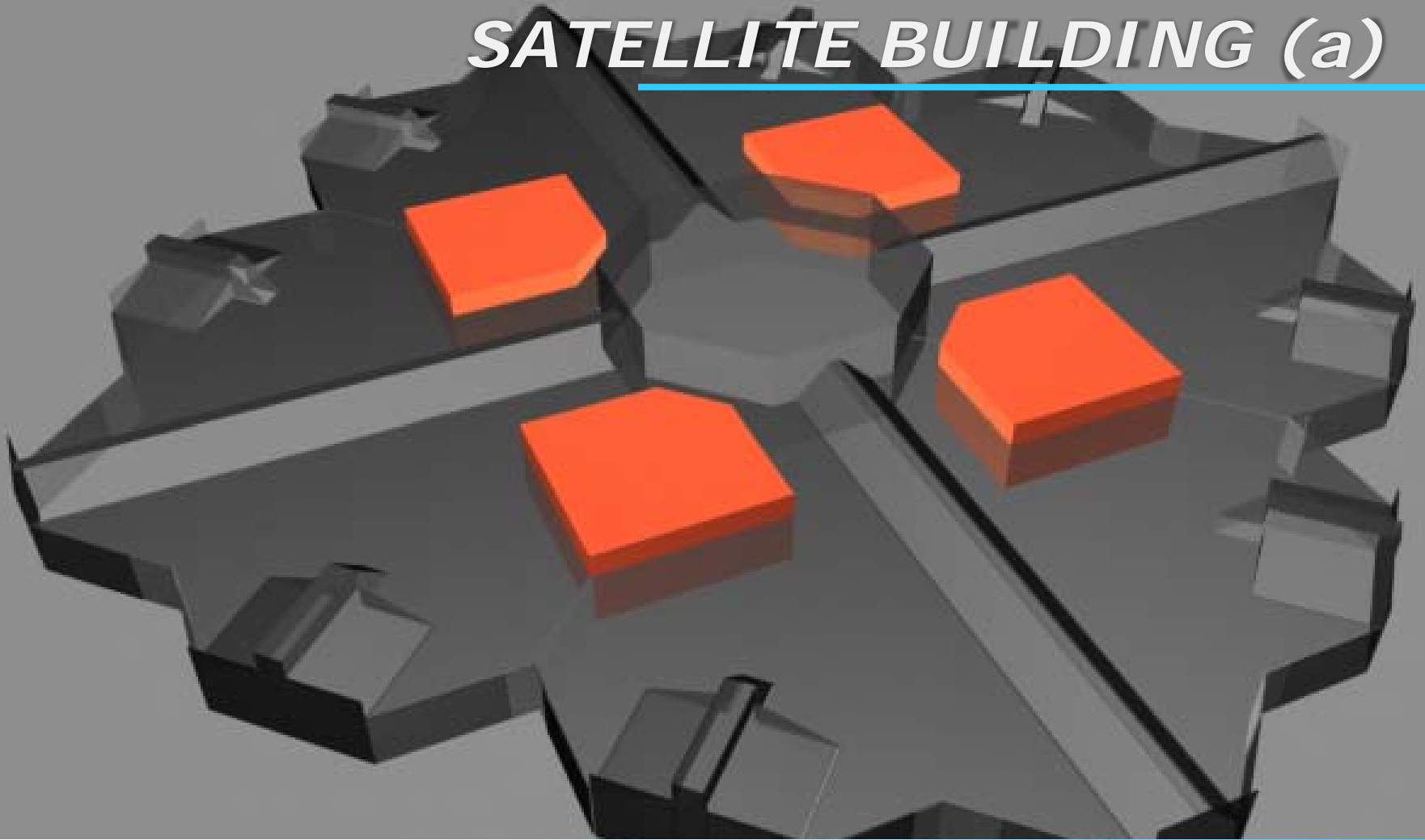
CENTRAL BUILDING (b)



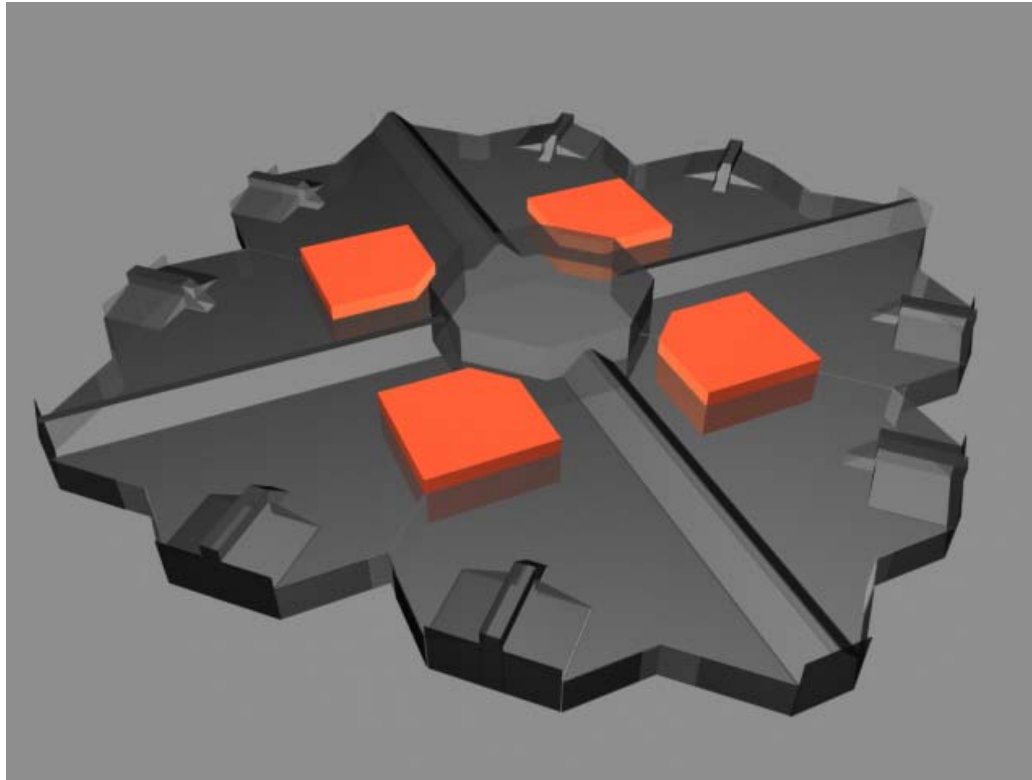
- Facility administration
- Vocational training and engineering centre
- First aid facilities
- IT department
- Security
- Restaurants and cafeteria
- Child care
- Penthouses and suites
- Heliport



SATELLITE BUILDING (a)



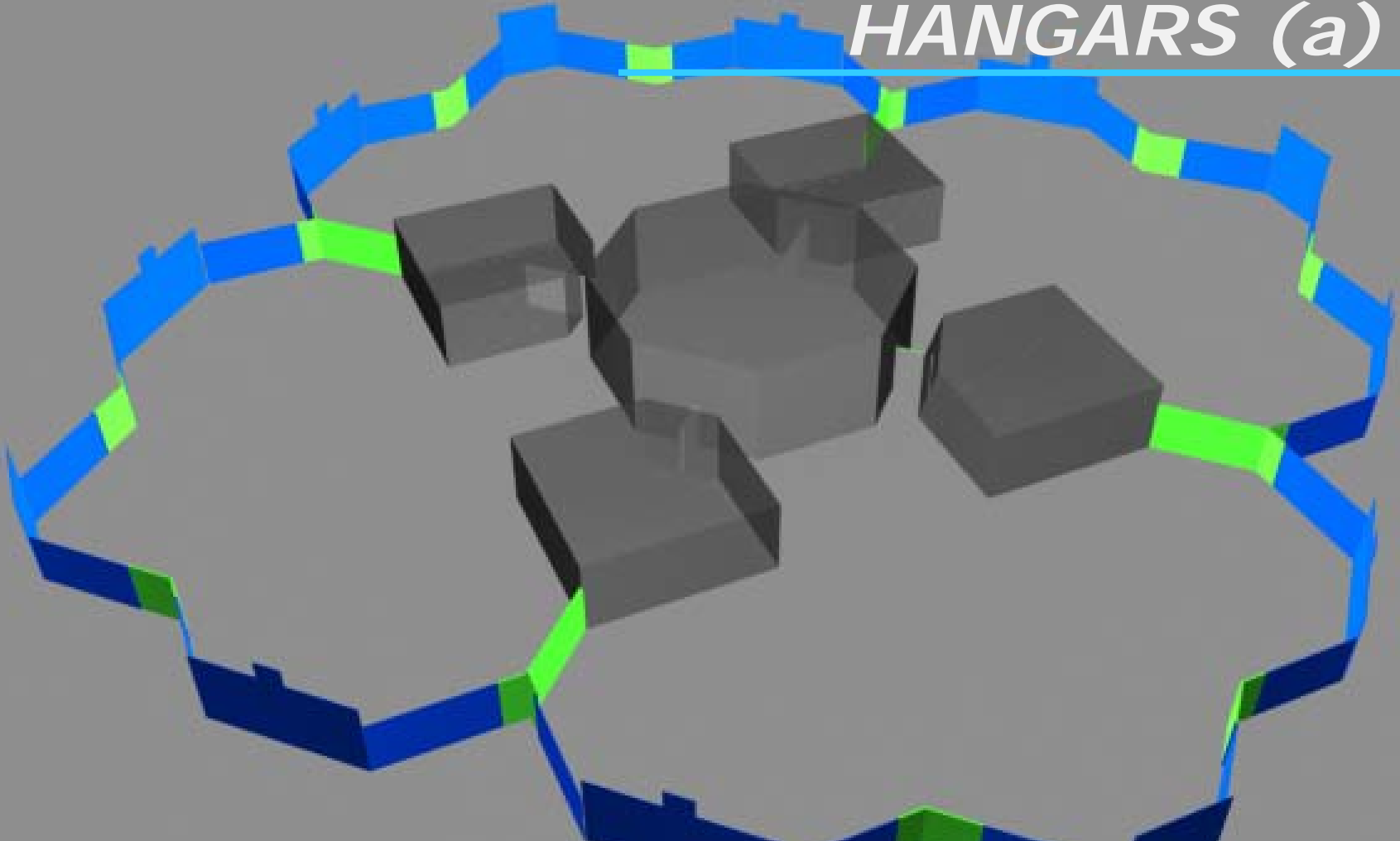
SATELLITE BUILDING (b)



- Workshops
- (engines, landing gear, avionics)
- Bay control centre
- Offices external companies/manufactures
- Sickbay



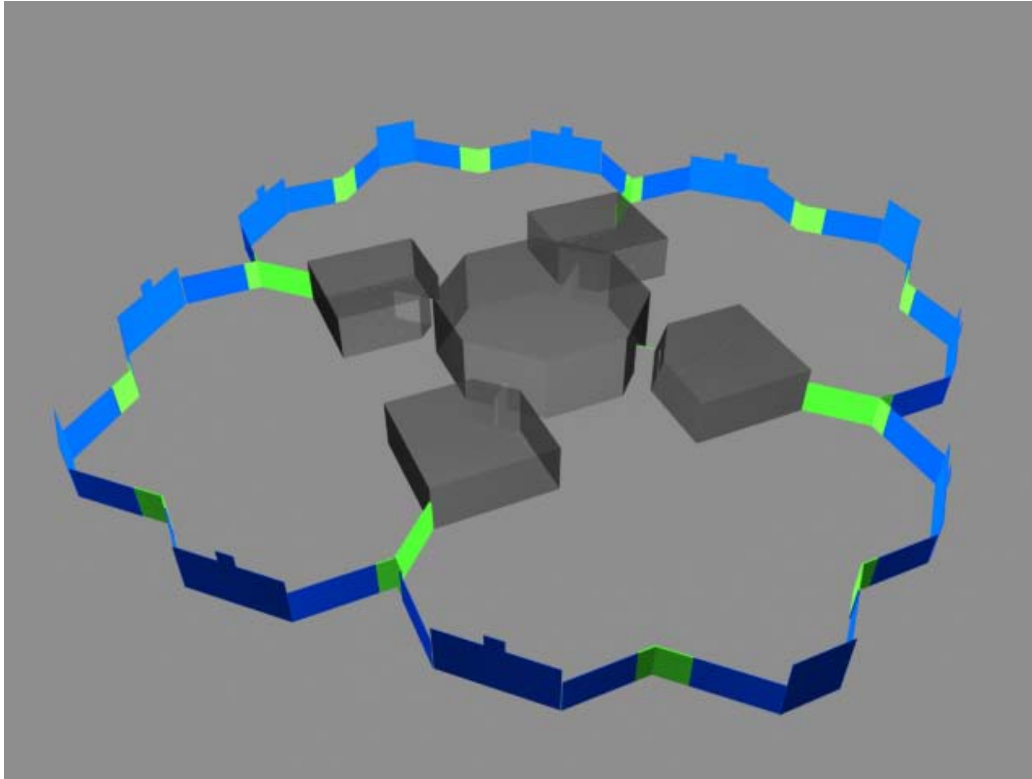
HANGARS (a)



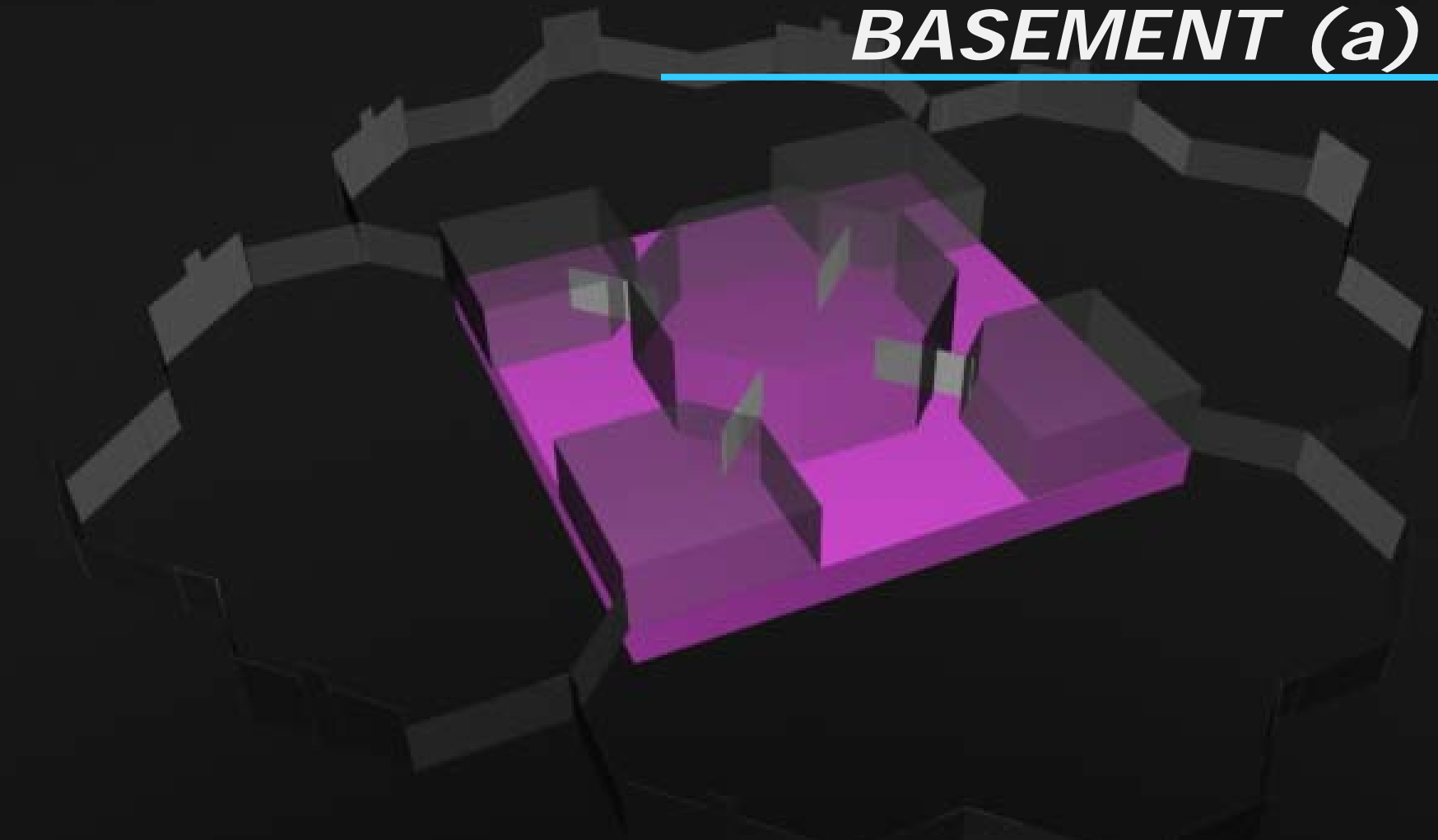
HANGARS (b)

4 sectors with 4 bays each for 8 wide- and 8 narrow bodies or any combination there of.

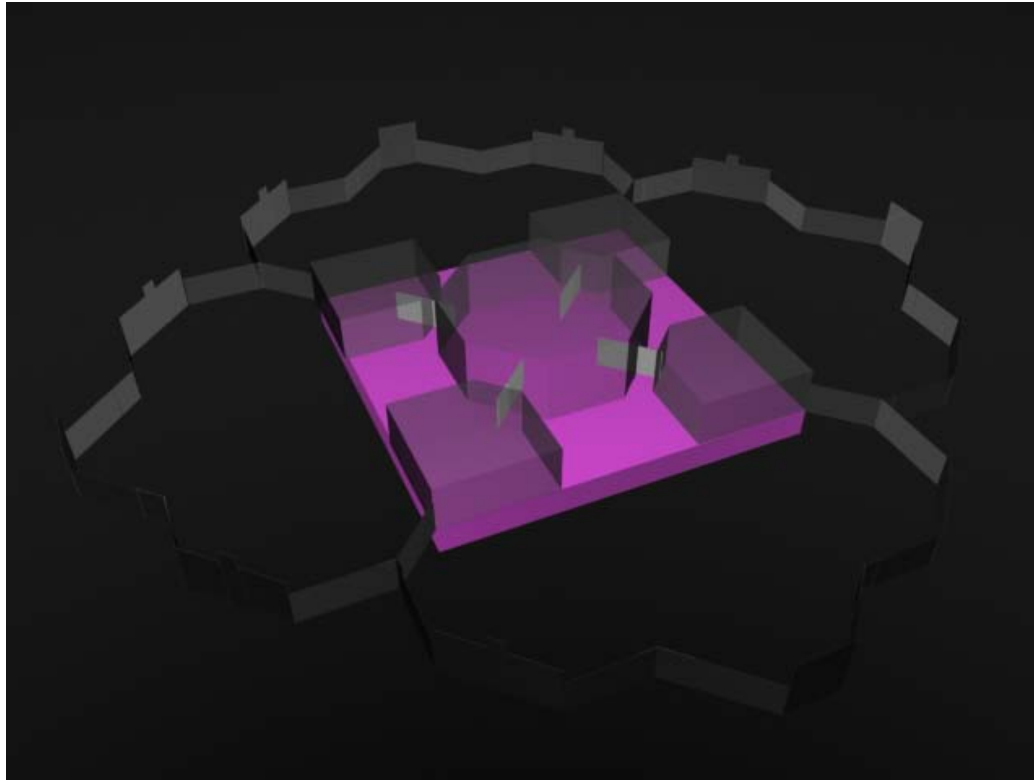
Capable of performing all types of services from letter checks to STC's, to painting.



BASEMENT (a)



BASEMENT (b)



Storage

- Engines
- Tires
- Avionics
- Simulator area

Shopping mall

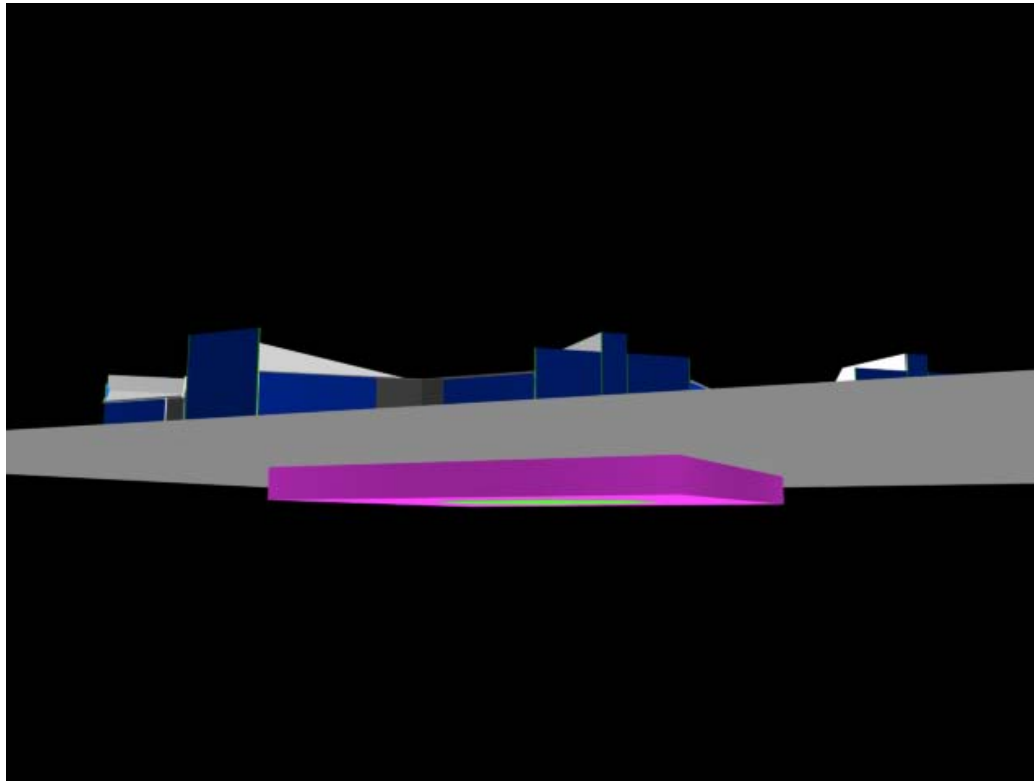
Sport center

Bank

Postal office



BASEMENT (c)



Storage

- Engines
- Tires
- Avionics
- Simulator area

Shopping mall

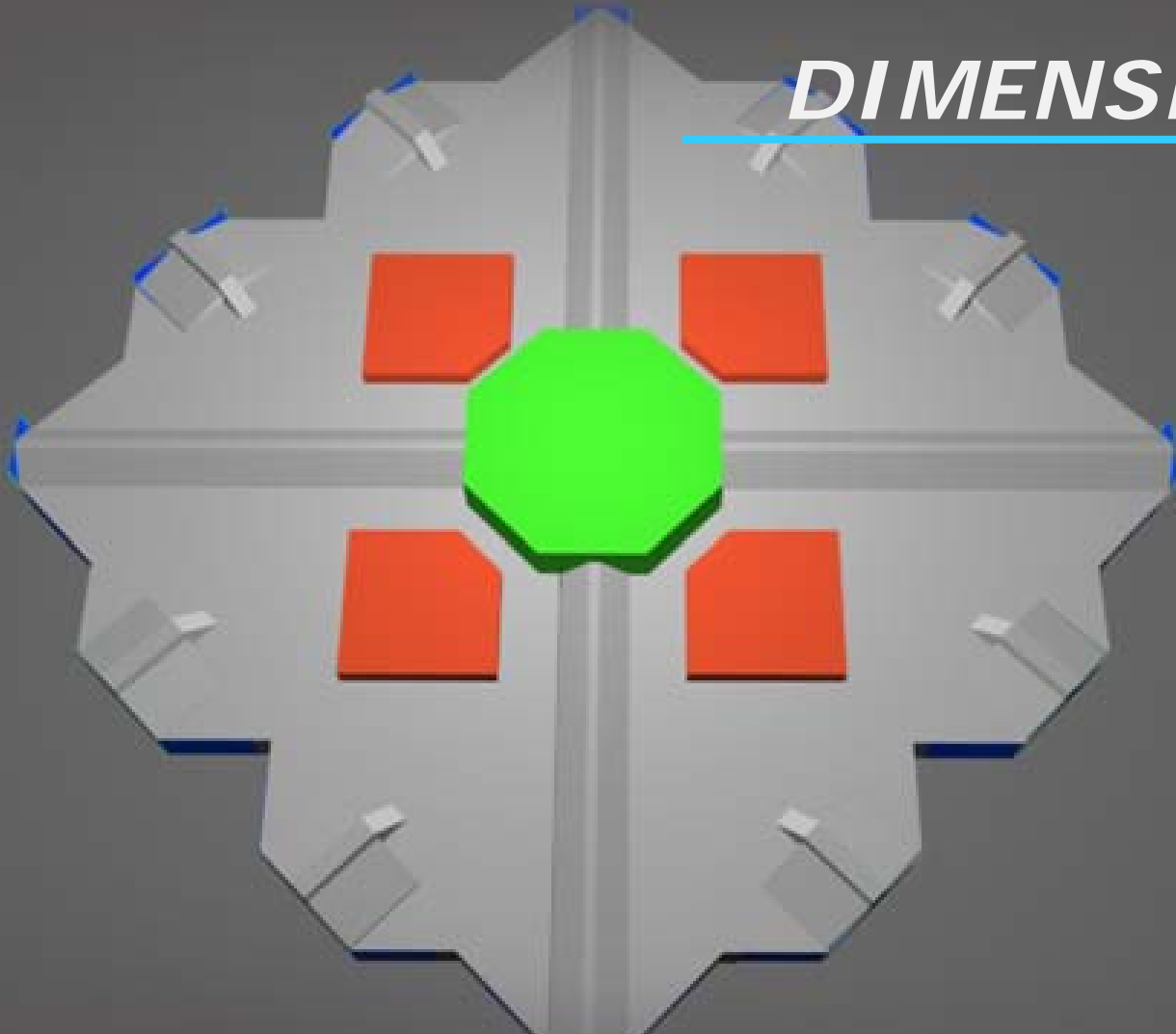
Sport center

Bank

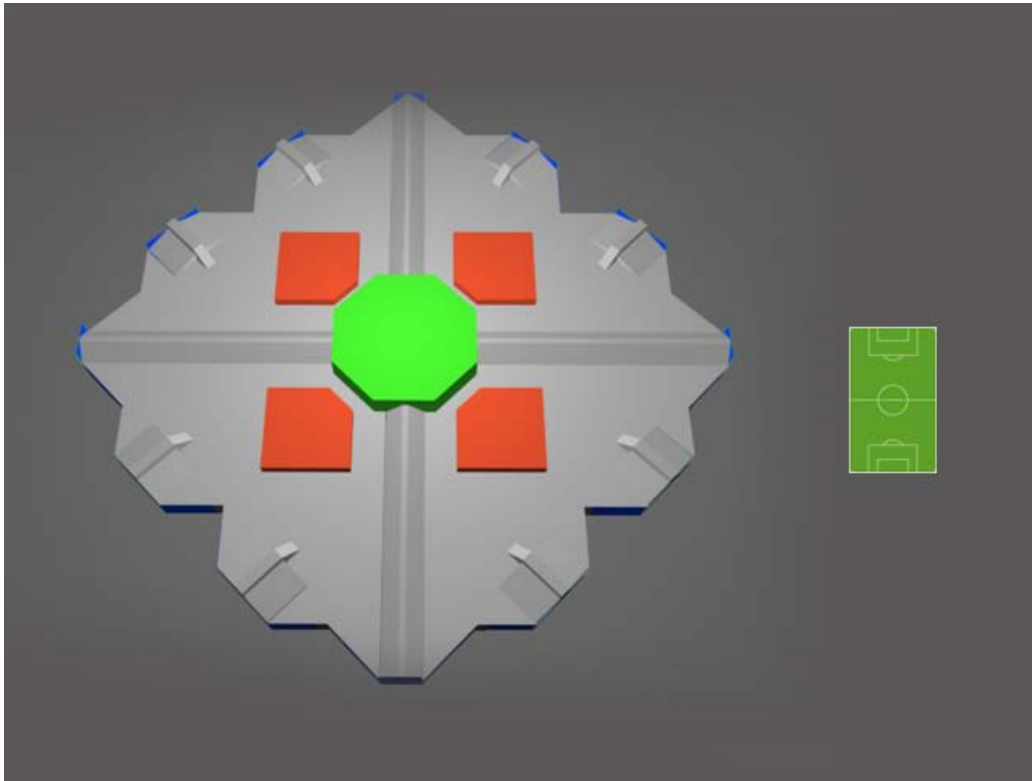
Postal office



DIMENSIONS (a)



DIMENSIONS (b)



Diameter

- 450 m

Height

- 40 m center building
- 35 m hangar doors

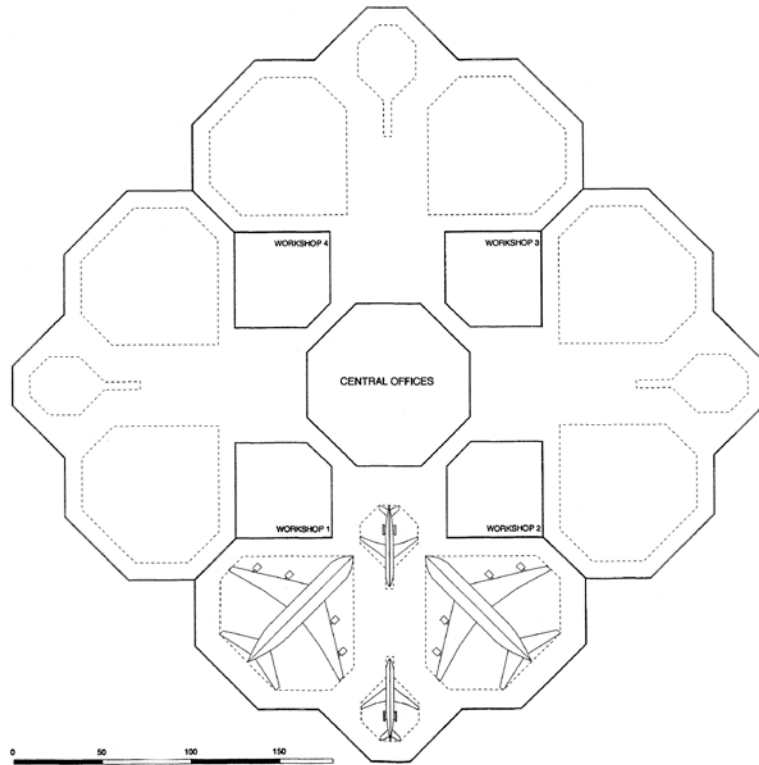
Basement

- 18 m
- 3 floors down

Area equals 16 football fields



DIMENSIONS (c)



Diameter

- 450 m

Height

- 40 m center building
- 35 m hangar doors

Basement

- 18 m
- 3 floors down

Area equals 16 football fields





ENVIRONMENT

GOAL

AAAWA's Star

- * Central Building (a)
- * Central Building (b)
- * Satellite Building (a)
- * Satellite Building (b)
- * Hangars (a)
- * Hangars (b)
- * Basement (a)
- * Basement (b)
- * Basement (c)
- * Dimensions (a)
- * Dimensions (b)
- * Dimensions (c)

ENVIRONMENT

SYSTEMS

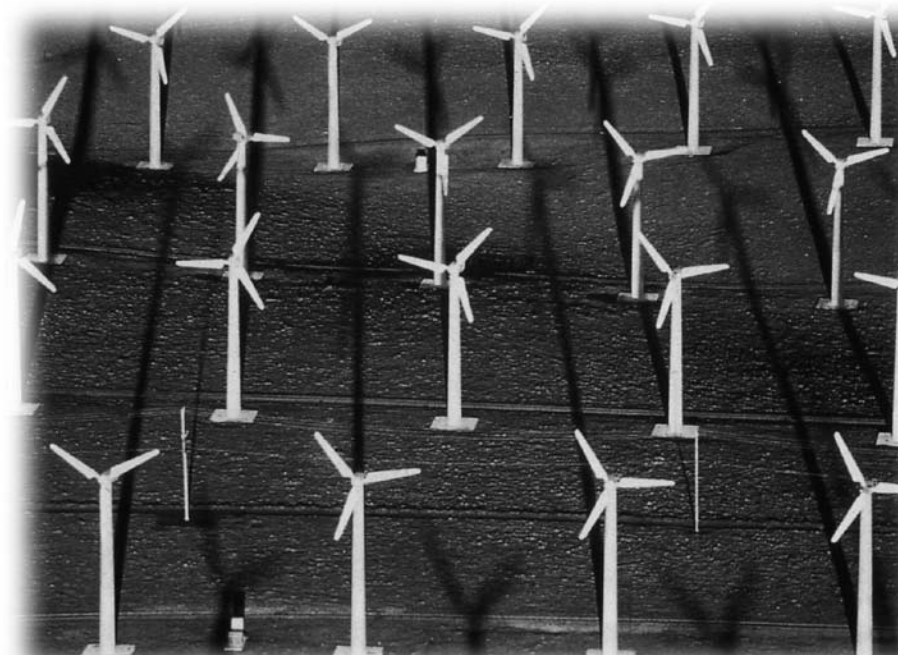
- * Megadoor (a)
- * Megadoor (b)

NEEDS

RETURN

CONCLUSION

- Water retention and recycling plant
- Solar energy
- Wind energy
- Hydro electric





Allied Aircraft Assistance Worldwide Association

SYSTEMS

GOAL

AAAWA's Star

- * Central Building (a)
- * Central Building (b)
- * Satellite Building (a)
- * Satellite Building (b)
- * Hangars (a)
- * Hangars (b)
- * Basement (a)
- * Basement (b)
- * Basement (c)
- * Dimensions (a)
- * Dimensions (b)
- * Dimensions (c)

ENVIRONMENT

SYSTEMS

- * Megadoor (a)
- * Megadoor (b)

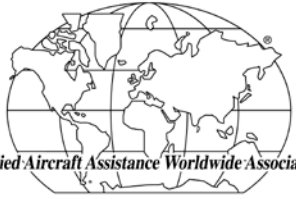
NEEDS

RETURN

CONCLUSION

Our chosen supplier with regards to the hangar doors enclosures and partitions, offering us the flexibility to change the hangar configuration is "Megadoor".





Allied Aircraft Assistance Worldwide Association

MEGADOOR (a)

GOAL

AAAWA's Star

- * Central Building (a)
- * Central Building (b)
- * Satellite Building (a)
- * Satellite Building (b)
- * Hangars (a)
- * Hangars (b)
- * Basement (a)
- * Basement (b)
- * Basement (c)
- * Dimensions (a)
- * Dimensions (b)
- * Dimensions (c)

ENVIRONMENT

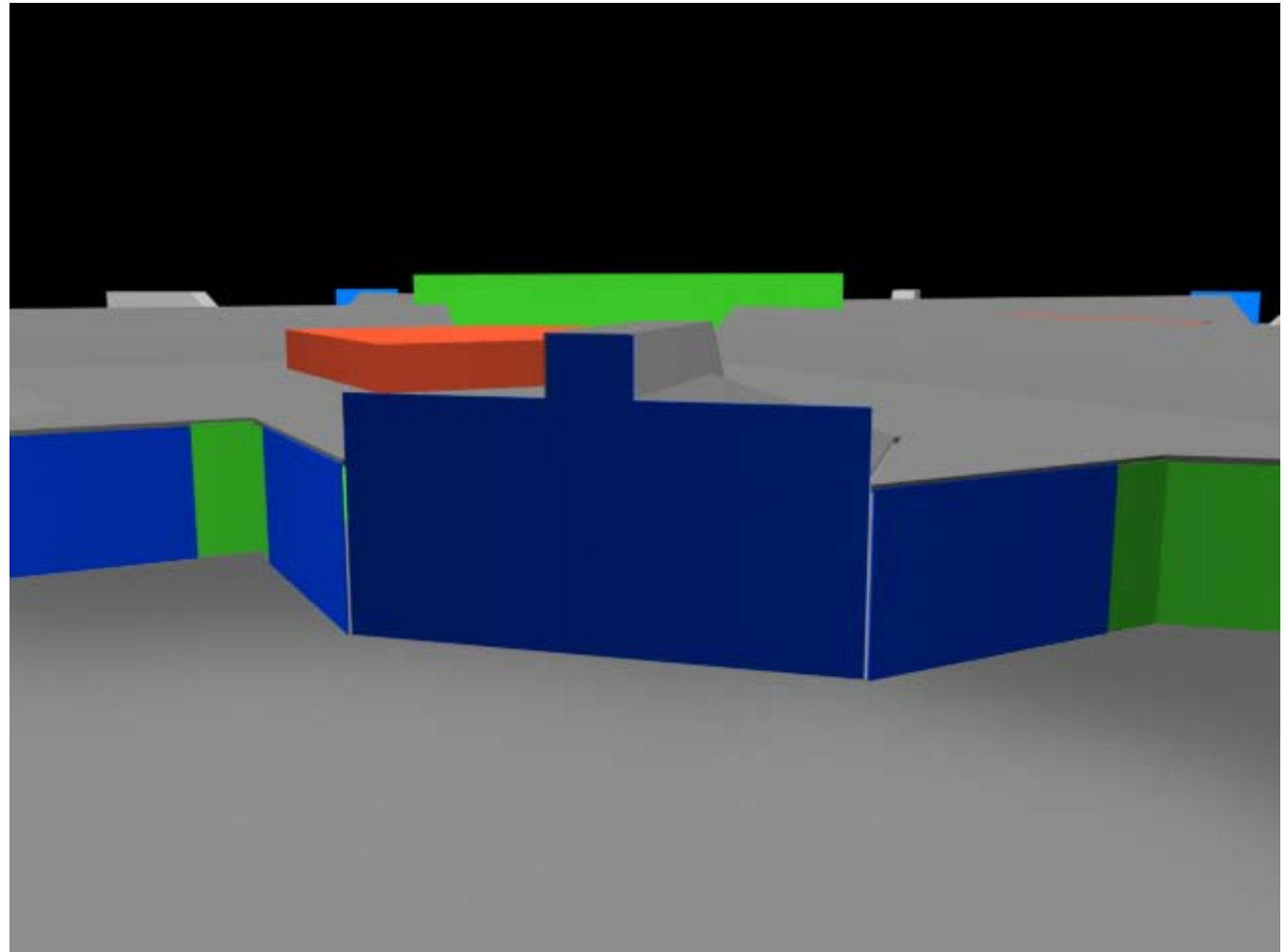
SYSTEMS

- * Megadoor (a)
- * Megadoor (b)

NEEDS

RETURN

CONCLUSION





MEGADOOR (b)

GOAL

AAAWA's Star

- * Central Building (a)
- * Central Building (b)
- * Satellite Building (a)
- * Satellite Building (b)
- * Hangars (a)
- * Hangars (b)
- * Basement (a)
- * Basement (b)
- * Basement (c)
- * Dimensions (a)
- * Dimensions (b)
- * Dimensions (c)

ENVIRONMENT

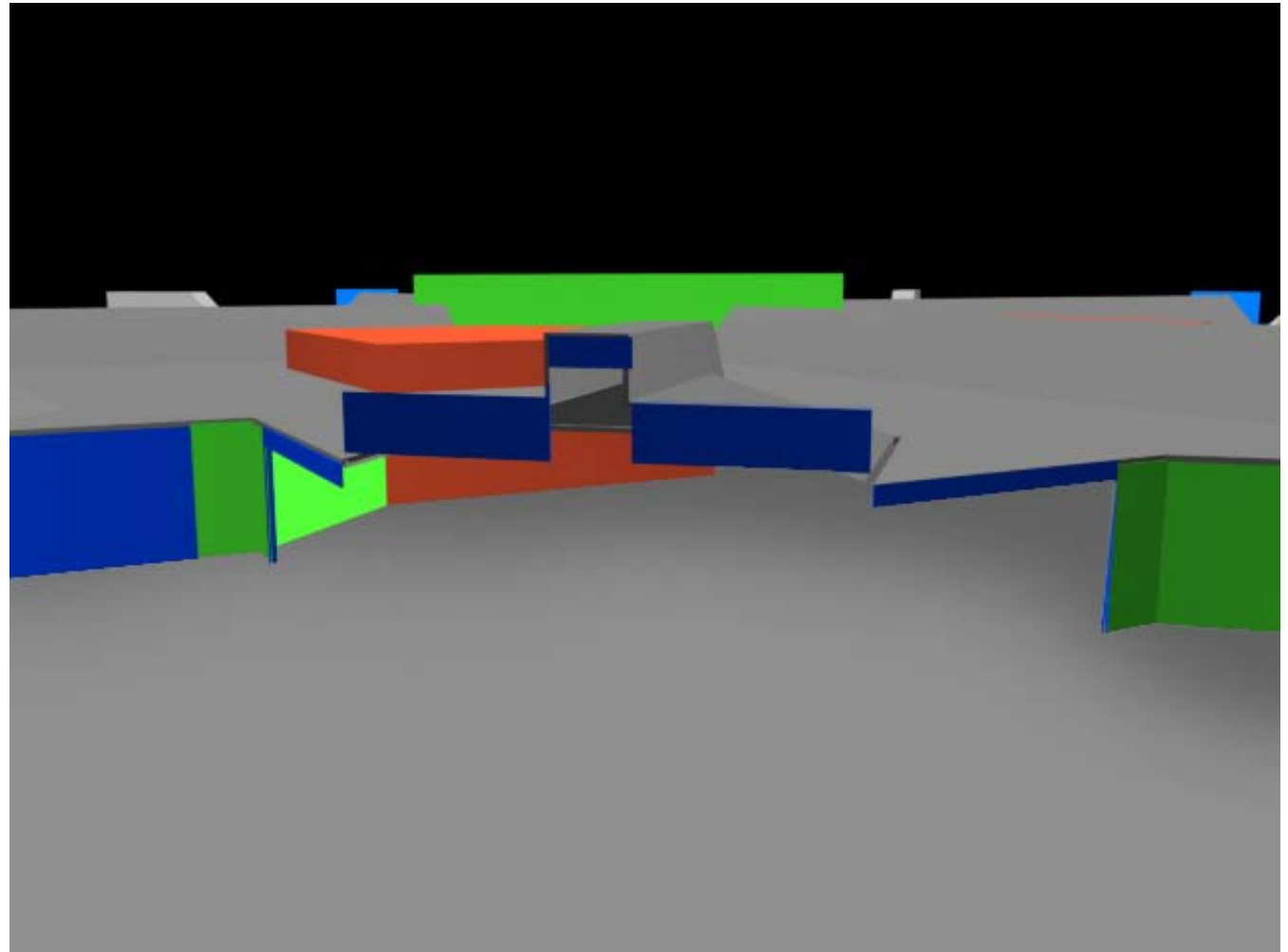
SYSTEMS

- * Megadoor (a)
- * Megadoor (b)

NEEDS

RETURN

CONCLUSION





Allied Aircraft Assistance Worldwide Association

NEEDS

GOAL

AAAWA's Star

- * Central Building (a)
- * Central Building (b)
- * Satellite Building (a)
- * Satellite Building (b)
- * Hangars (a)
- * Hangars (b)
- * Basement (a)
- * Basement (b)
- * Basement (c)
- * Dimensions (a)
- * Dimensions (b)
- * Dimensions (c)

ENVIRONMENT

SYSTEMS

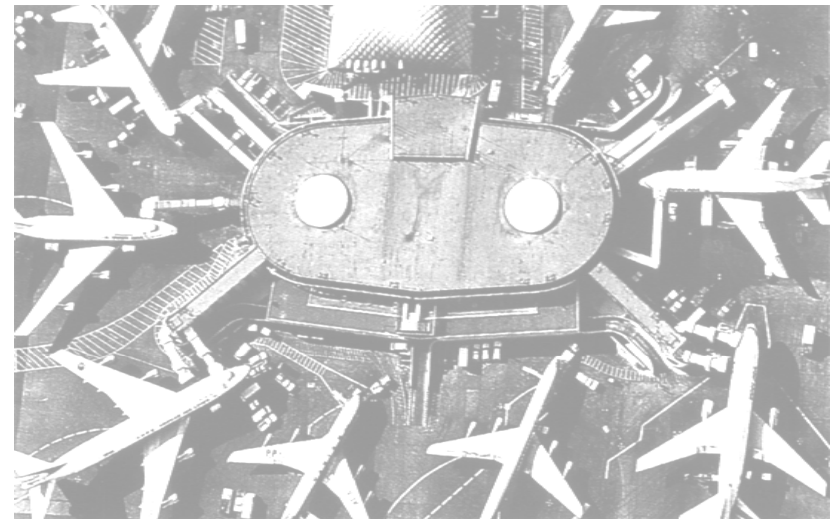
- * Megadoor (a)
- * Megadoor (b)

NEEDS

RETURN

CONCLUSION

- The will to lift the local economy/community into the 21-st century.
- A young energetic, enthusiastic and dynamic student force.
- A small, yet dedicated group for instructional purposes.





Allied Aircraft Assistance Worldwide Association

RETURN

GOAL

AAAWA's Star

- * Central Building (a)
- * Central Building (b)
- * Satellite Building (a)
- * Satellite Building (b)
- * Hangars (a)
- * Hangars (b)
- * Basement (a)
- * Basement (b)
- * Basement (c)
- * Dimensions (a)
- * Dimensions (b)
- * Dimensions (c)

ENVIRONMENT

SYSTEMS

- * Megadoor (a)
- * Megadoor (b)

NEEDS

RETURN

CONCLUSION

Within a 5 year period there will be a total self-sufficient experienced working force, able to train others.

- With a maintenance market of over \$256 billion per annum, each hangar, out of a number of 20, would be considered very successful if it achieved a turnover of 0,5% of that market.





Allied Aircraft Assistance Worldwide Association

CONCLUSION

GOAL

AAAWA's Star

- * Central Building (a)
- * Central Building (b)
- * Satellite Building (a)
- * Satellite Building (b)
- * Hangars (a)
- * Hangars (b)
- * Basement (a)
- * Basement (b)
- * Basement (c)
- * Dimensions (a)
- * Dimensions (b)
- * Dimensions (c)

ENVIRONMENT

SYSTEMS

- * Megadoor (a)
- * Megadoor (b)

NEEDS

RETURN

CONCLUSION

"Allied Aircraft Assistance Worldwide Association, therefore can lay claim to the fact that they effectively own the plan and format of the most modern, innovative, economic, environment friendly and efficient facility, one any designated maintenance airport cannot afford to do without."

***Lord Bart-Jan Mathôt of Loch Leven and Glencoe
(Chairman)***



AAAWA



Allied Aircraft Assistance Worldwide Association

[The One-Stop-Shop Aviation Solution Company](#)

